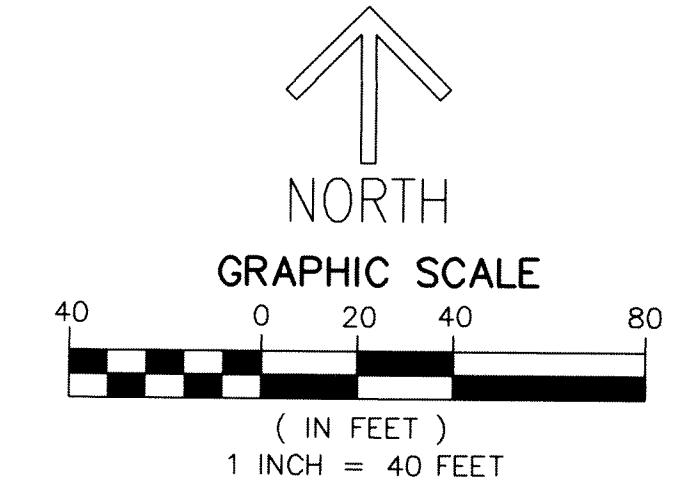
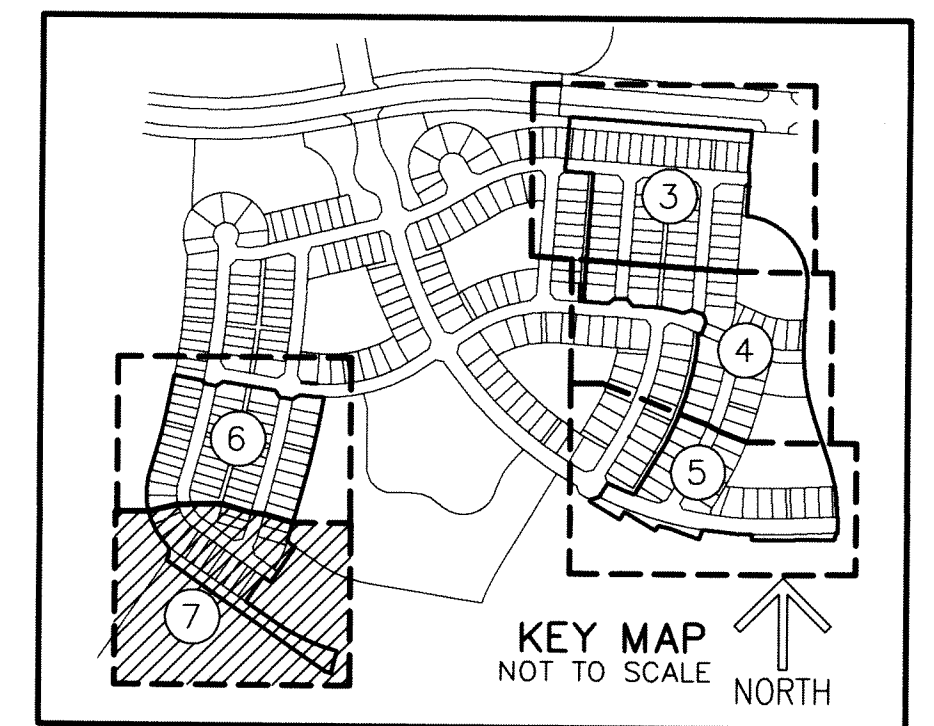
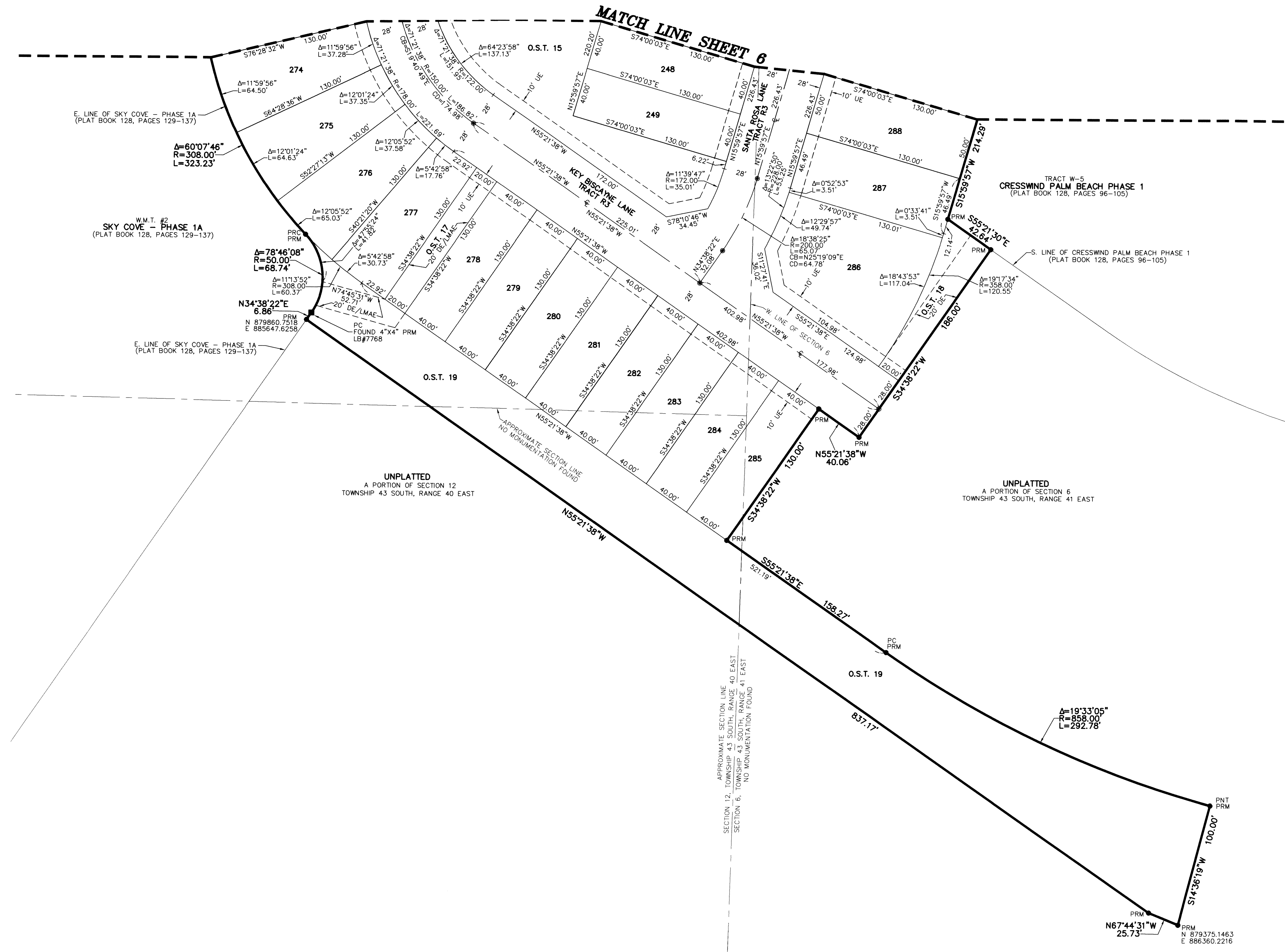


THIS INSTRUMENT PREPARED BY
 DAVID P. LINDLEY
 OF
CAULFIELD and WHEELER, INC.
 SURVEYORS - ENGINEERS - PLANNERS
 7900 GLADES ROAD, SUITE 100
 BOCA RATON, FLORIDA 33434 - (561)392-1991
 CERTIFICATE OF AUTHORIZATION NO. LB3591

CRESSWIND PALM BEACH PHASE 2

BEING A PORTION OF SECTION 6, TOWNSHIP 43 SOUTH, RANGE 41 EAST,
 AND SECTIONS 1 AND 12, TOWNSHIP 43 SOUTH, RANGE 40 EAST,
 CITY OF WESTLAKE, PALM BEACH COUNTY FLORIDA

205
 SHEET 7 OF 7



NOTES
COORDINATES, BEARINGS AND DISTANCES
 COORDINATES SHOWN ARE GRID
 DATUM = NAD 83 (2007 ADJUSTMENT)
 ZONE = FLORIDA EAST
 LINEAR UNIT = US SURVEY FEET
 COORDINATE SYSTEM 1983 STATE PLANE
 TRANSVERSE MERCATOR PROJECTION
 ALL DISTANCES ARE GROUND
 SCALE FACTOR = 1.0000017
 GROUND DISTANCE X SCALE FACTOR = GRID DISTANCE
 BEARINGS AS SHOWN HEREON ARE GRID DATUM,
 NAD 83 (2007 ADJUSTMENT), FLORIDA EAST ZONE.

LEGEND/ABBREVIATIONS
 C - CENTERLINE
 Δ - DELTA (CENTRAL ANGLE)
 CB - CHORD BEARING
 CD - CHORD DISTANCE
 DE - DRAINAGE EASEMENT
 E - EASTING (WHEN USED WITH COORDINATES)
 L - ARC LENGTH
 LMAE - LAKE MAINTENANCE ACCESS EASEMENT
 LAE - LIMITED ACCESS EASEMENT
 LB - LICENSED BUSINESS
 N - NORTHING (WHEN USED WITH COORDINATES)
 (NR) - NON-RADIAL LINE
 O.S.T. - OPEN SPACE TRACT
 PC - POINT OF CURVATURE
 PT - POINT OF TANGENCY
 PNT - POINT OF NON-TANGENCY
 PRC - POINT OF REVERSE CURVATURE
 R - RADIUS
 RPE - RURAL PARKWAY EASEMENT
 U.E. - UTILITY EASEMENT
 SET PERMANENT CONTROL POINT
 NAIL AND DISK STAMPED "C&W PRM LB3591"
 ● PRM - SET PERMANENT REFERENCE MONUMENT
 SET 5/8" IRON ROD WITH CAP
 STAMPED "C&W PRM LB3591"
 ■ PRM - FOUND PERMANENT REFERENCE MONUMENT
 4"x 4"x 24" CONCRETE MONUMENT WITH
 DISK STAMPED "PRM LB7768"